

First Floor: Entrance Hall

Both sides of the museum are covered with glass panels that let in natural light, and stretch up to a curved roof constructed of cedar logs thinned from forests all across Kyushu, making you feel as though you are a part of nature during your visit.

Please note that the museum shop is only open during the museum's operating hours.  
(The museum shop may be closed on an ad-hoc basis.)

Ajippa  
Interactive Exhibition Gallery

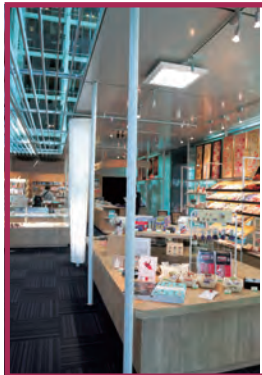
Free Admission

Ajippa is a unique exhibition gallery that allows visitors of all ages to get up close and personal with Asian and European cultures. With constantly rotating exhibits, visitors can try out some of the traditional games, costumes, and musical instruments from various parts of the world.



Museum Hall (Seating capacity: 288 seats)

This multipurpose hall plays host to various events, including lectures and concerts.



Museum Shop

Check out our extensive lineup of museum-exclusive merchandise, including postcards, stationery, as well as books and catalogs from our exhibitions.

Tel: 092-918-8818

Find us on social media!

Can't get enough of the museum? Find out what we're up to on Twitter, learn more about our collections from our researchers on Youtube, and catch up with our international staff on our museum blog! We also have subtitles for our *Kyuhaku at Home!* series, as well as a selection of videos introducing our Special Exhibitions.



Collections: Deep Dive series



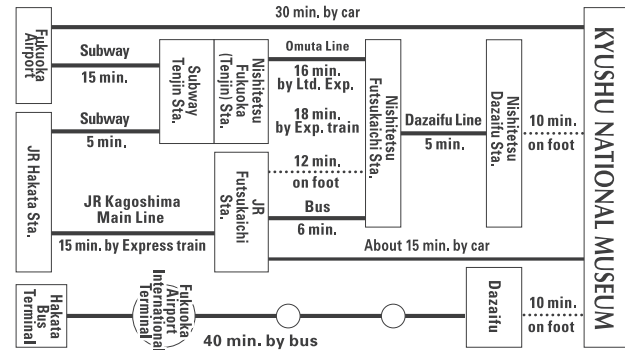
Kyuhaku at Home! series



Welcome to Kyushu National Museum.

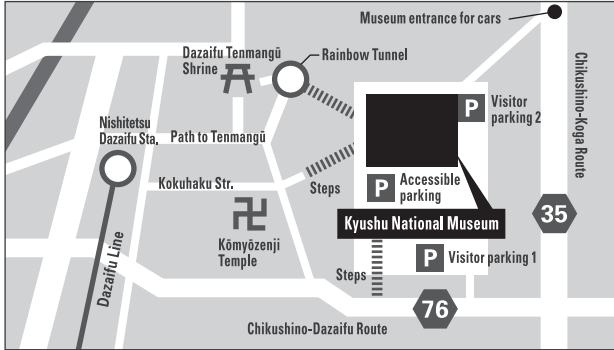
Kyushu National Museum opened in 2005, and is currently the youngest national museum in Japan. Located in the historic region of Dazaifu, the museum explores the story of Japan through its history of cultural exchange with Asia, while also playing host to special exhibitions throughout the year. At the same time, it aims to deliver an experience that is more engaging than a classroom setting, and more illuminating than a textbook. Come on down and take an unforgettable trip through Japan's history.

Getting to the Museum



By Kyushu Expressway	About 20 min. from either the Dazaifu or Chikushino interchange via the Takao intersection
By Fukuoka Urban Expressway	About 20 min. from the Mizuki exit via the Takao intersection

All travel times provided in this diagram are estimates.  
There are a limited number of parking lots (fees applicable) available at the museum.



Museum Opening Hours

Opening Hours: 09:30–17:00  
09:30–20:00 on Kyuhaku After Five days  
Last admission is 30 minutes before closing  
Closed: Mondays (except public holidays, in which case the following working day), end-of-year holidays

Admission Information (Cultural Exchange Exhibition Hall)

Admission Fees: ¥700 for adults, ¥350 for university students  
Please refer to our official website for the latest information.

- \* Free admission for individuals with disability documentation, and up to one accompanying person. Please present relevant documents at the gallery entrance.
- \* Free admission for students of high school level and lower, visitors under the age of 18, and visitors aged 70 and above. Please present an original photo ID indicating date of birth at the gallery entrance.
- \* Free admission for students and teachers from schools in the Campus Members program. Please present your student or staff card at the gallery entrance.
- \* Admission fees for Special Exhibitions are charged separately.



4-7-2 Ishizaka, Dazaifu City,  
Fukuoka, 818-0118 Japan  
www.kyuhaku.jp/en/



Contact Us

For inquiries, please contact us via our online form accessible through our official website, or call us at the following number: 050-5542-8600 (only in Japanese; operating hours: 09:00–20:00)







Use this space for our commemorative stamp or to pen your thoughts.

## Third Floor: Special Exhibition Hall

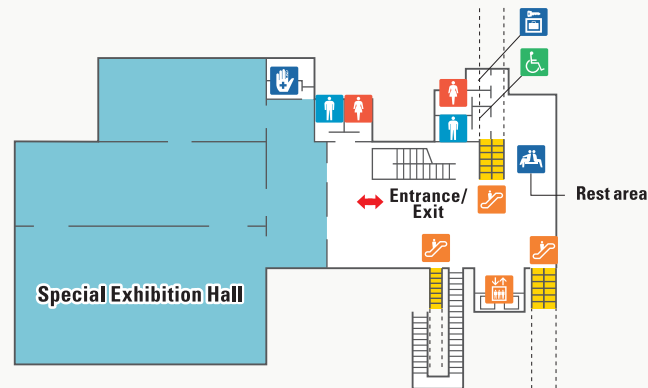
Ticketed

This flexible exhibition space transforms to fit the vast range of special exhibitions that come to our museum, while still retaining a relaxing atmosphere for visitors to enjoy the objects on display. Feast your eyes on renowned treasures gathered from Japan and all over the world in our Special Exhibitions.



**Tickets to the Cultural Exchange Exhibition Hall (permanent exhibition) can be purchased at the ticket booths or counter (marked with 🎫).**

**Tickets to the Special Exhibition Hall are available only at the ticket booths on the first floor.**



## Fourth Floor: Cultural Exchange Exhibition Hall

(Permanent Exhibition)

Ticketed

Subtitled “Ocean Ways, Asian Paths,” Kyushu National Museum’s permanent exhibition allows visitors to travel back in time to experience Japan’s history of cultural exchange with Asia and Europe.

\* Exhibits and displays are subject to change without prior notice.

### Five Main Themes

This gallery is divided into five overarching themes that cover Japan’s history from antiquity to near modernity. Each theme is marked by its own color, allowing visitors to see how each exhibit fits into the larger narrative.

- 1 Green: Paleolithic Age to Jōmon period
- 2 Red: Yayoi to Kofun period
- 3 Purple: Asuka to Heian period
- 4 Blue: Kamakura to Muromachi period
- 5 Orange: Azuchi-Momoyama to Edo period



### 12<sup>th</sup> – 16<sup>th</sup> century Merchants of the Asian Seas

This period saw multiple invasion attempts on Japan made by the Mongols. At the same time, cultural exchange with foreign countries continued, facilitated by traveling Zen Buddhist monks and flourishing international trade.



### 16<sup>th</sup> – 19<sup>th</sup> century Smaller World, Closer West

The final theme covers Japan’s exchange with Europe during the Age of Discovery, its interactions with the world through the four gateways that remained open in a time of national isolation, and the vibrant local culture that developed in the Edo period.



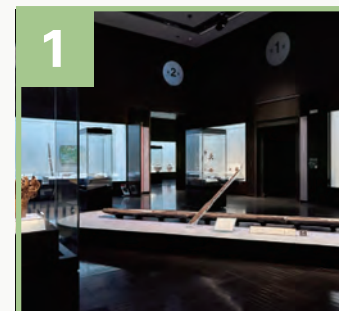
### 7<sup>th</sup> – 12<sup>th</sup> century Nation Building: The Age of the Envoys

This theme illustrates Japan’s journey to becoming a nation as it continued to engage in exchange with its neighbors, China and the Korean Peninsula. It was during this period that Japan officially brought in Buddhism and legal codes from Tang China.



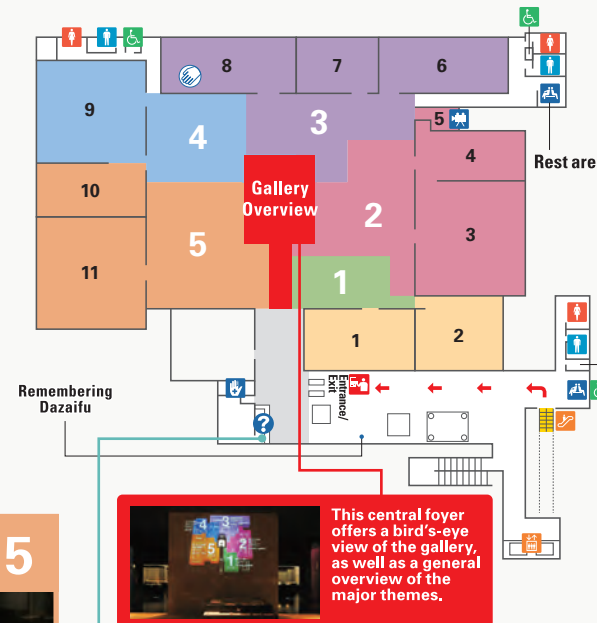
### 4<sup>th</sup> century BCE – 7<sup>th</sup> century CE Political Power: Cultivating Rice

This theme features the spread of rice cultivation across Japan in the Yayoi period, kings’ tombs where many items were buried, the introduction of new pottery styles and horse-riding culture into Japan in the Kofun period, and offerings made on the sacred island of Okinoshima and associated sites in the Munakata region of Fukuoka.



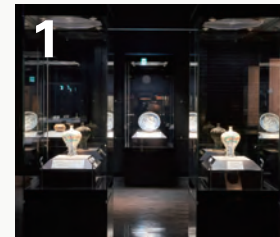
### 35,000 years ago – 4<sup>th</sup> century BCE Jōmon Culture: Ocean-Bound

This theme focuses on Japan’s interactions with the cultures around them during the Paleolithic Age and the Jōmon period, as seen through their bold earthenware designs and the stone tools they employed.



### Audio Guides Free

Multilingual audio guides for the Cultural Exchange Exhibition Hall are available on the NaviLens mobile application.



### Donors’ Gallery

This exhibition room features valuable objects that have been generously donated to us. Some of the must-see items include a **bottle with pine, bamboo and palm motifs in polychrome overglaze enamels**, and Katsushika Hokusai’s *Daily Sketches for Exorcism and Longevity*.



### KANEKO Kazushige Memorial Gallery —Asian Ethno-Forms—

Kaneko Kazushige donated over 1,000 valuable objects to our museum relating to Asian ethnography. This gallery is permanently dedicated to displaying a selection of these objects that will paint a colorful picture of Asian cultures.

### Museum Etiquette

- Food and beverages, including candy, gum, and bottled beverages, are allowed **ONLY** in designated areas to protect cultural properties from harmful insects and mold.
- Please deposit any large baggage and/or umbrellas at our cloakroom, in the coin lockers, or at the umbrella stands. These amenities are available for free.
- No pets are allowed in the museum, except for guide and service dogs.
- Smoking is prohibited in the museum.
- Please do not visit the museum when drunk.
- Photography of exhibits is permitted in the Cultural Exchange Exhibition (exceptions apply); photography rules for Special Exhibitions vary between exhibitions.
- Please switch off your mobile phones, or set them to silent mode while in the galleries. Please also refrain from using your phone inside the galleries.
- Please do not touch the exhibits or the glass display cases. Please also do not place any items on top of display cases.
- Please use only wooden pencils for note-taking when inside the galleries.
- Please keep your voices down.
- Please do not lie down on the benches or run in the museum.
- Sound reverberates easily in our galleries. As such, visitors wearing high heels or any other shoes that make noise should be considerate of other visitors and tread lightly.