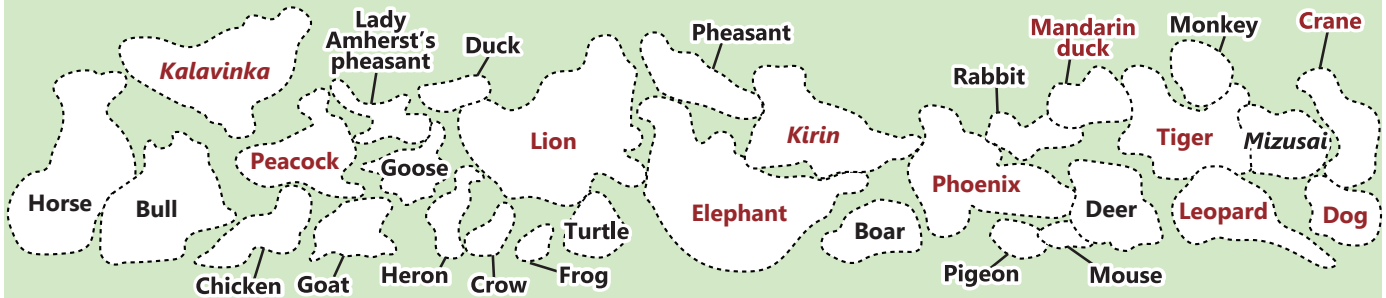
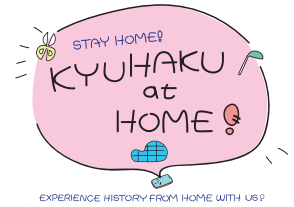




Spot the animals in this painting!

Nirvana (Important Cultural Property) by Myōson



Animals found in Japan

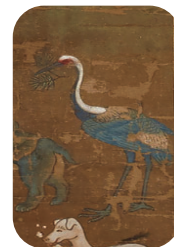
We're animals that the artist would have seen in real life!



This is a **Chinese snapping turtle**! Once he gets his jaws into you, he won't let go!!



This **black-spotted pond frog** lives next to bodies of water. It likes to eat the three-leaf arrowhead plant.



This is a beautiful **white-naped crane**! The underside of its neck is dark grey, and as a distinctive dash of red on its cheeks.

Animals with familiar names, but odd appearances

These animals are not native to Japan, and were based off other references, which is why they look a little strange...



This **elephant** is on its back as it cries in sorrow. Doesn't it look like a cat or a dog?



The **tiger** and **leopard** have rather large faces... They are often found together in Japanese art!



This **dog** has droopy ears, and seems to be a breed that's not native to Japan. That must be why his tail is so long and skinny!

Imaginary creatures



The **kirin** only appears in times of world peace, and was thought to be an auspicious animal.



This **lion** was based on an African lion! It is thought of as a guardian deity.

The **kalavinka** has a beautiful voice that captures humans' hearts. It lives in the Western Pure Land.

