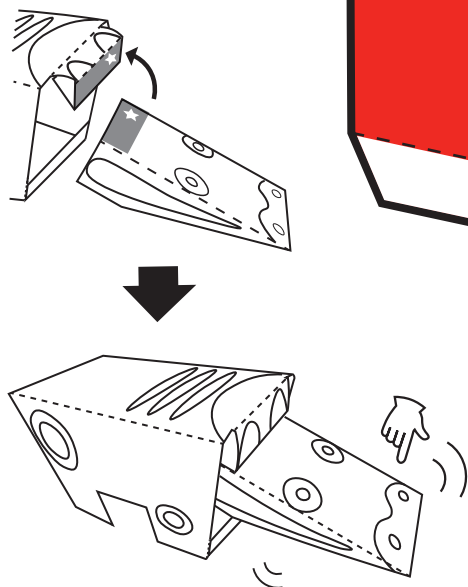
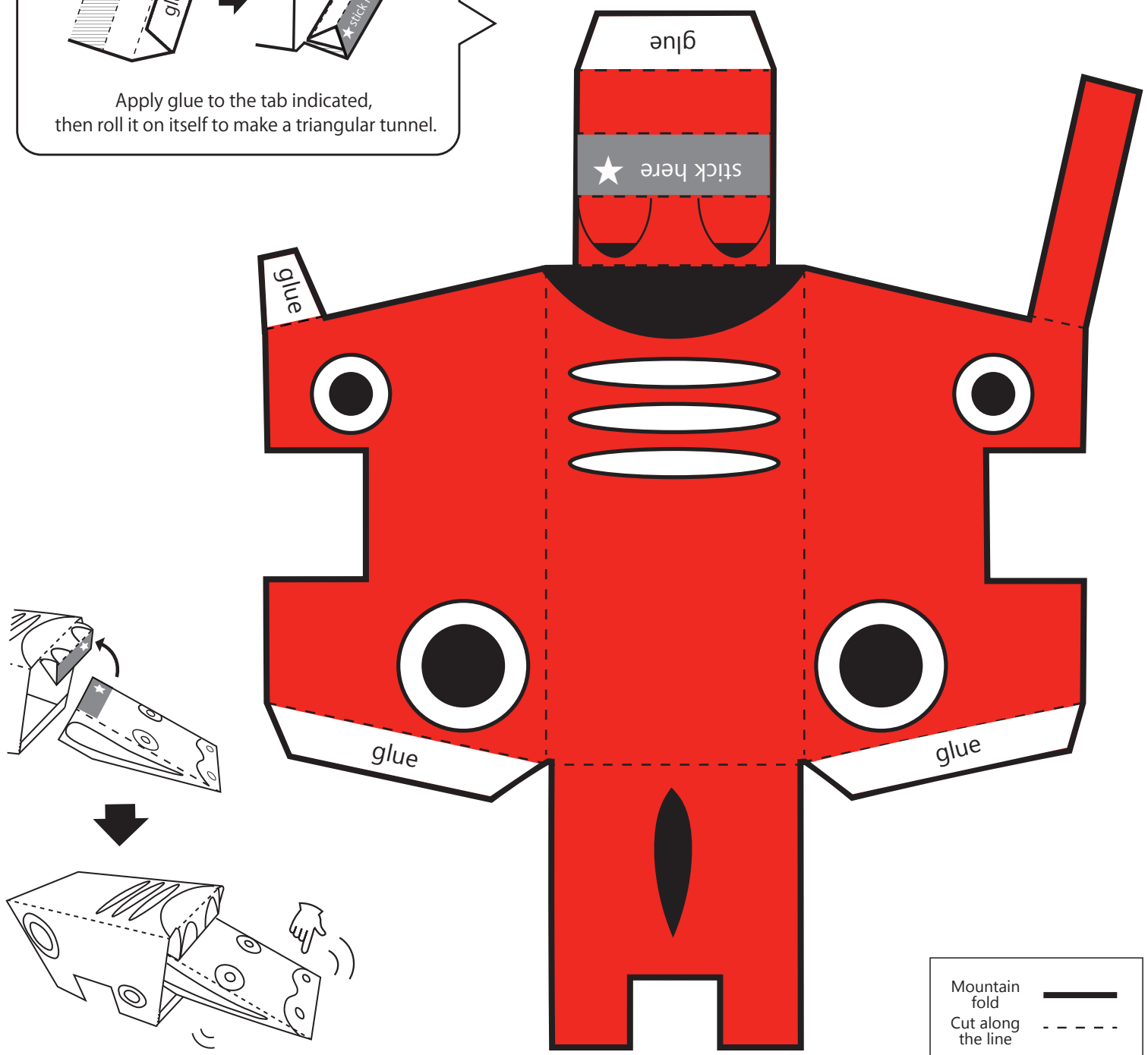
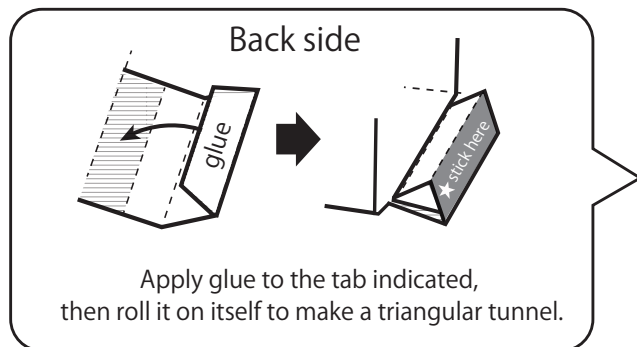


# Provincial Toys from Fukushima

## *Akabeko* ("Red cow")

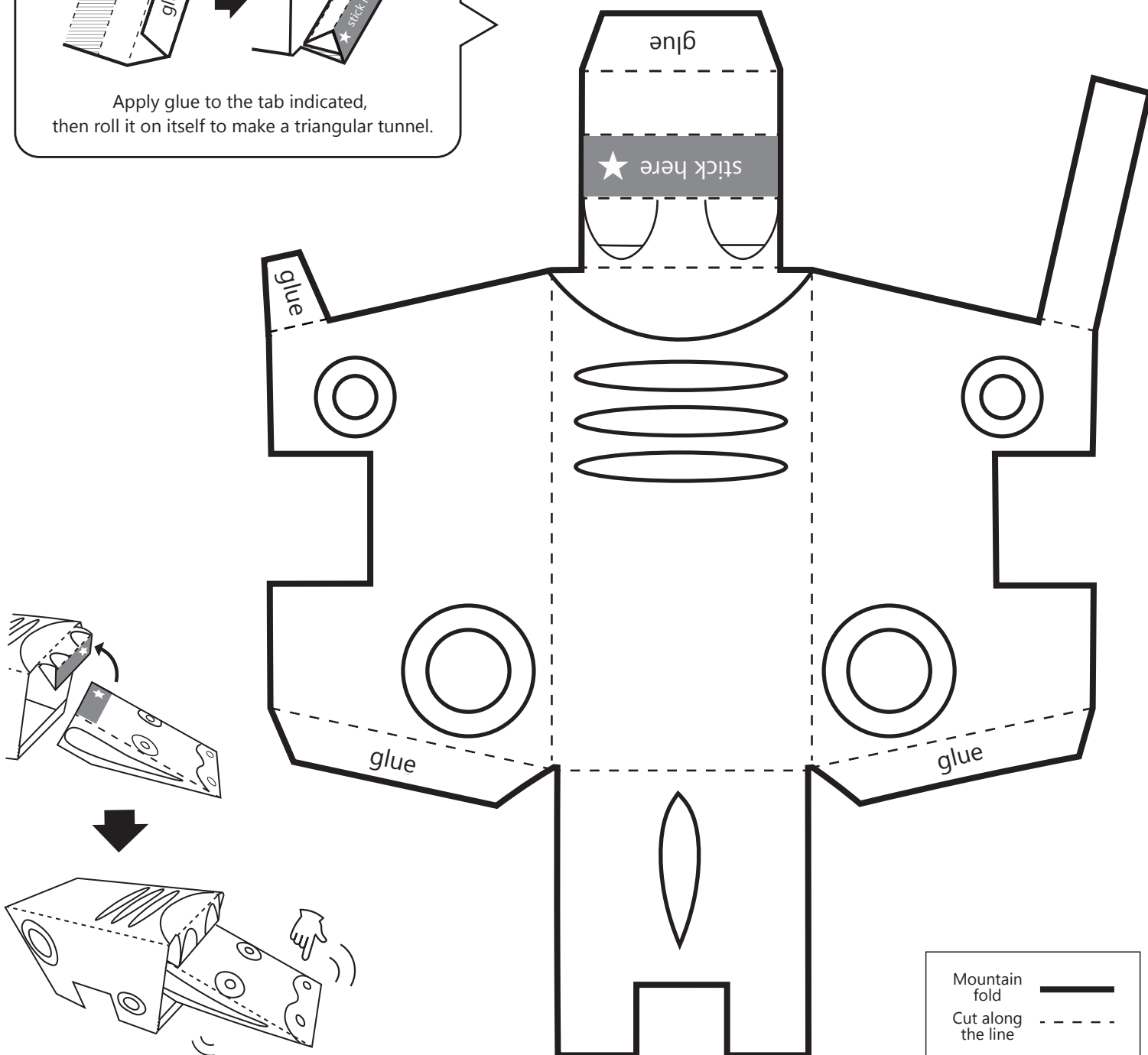
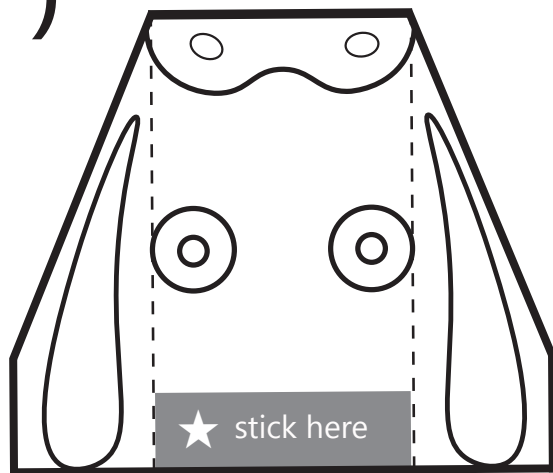
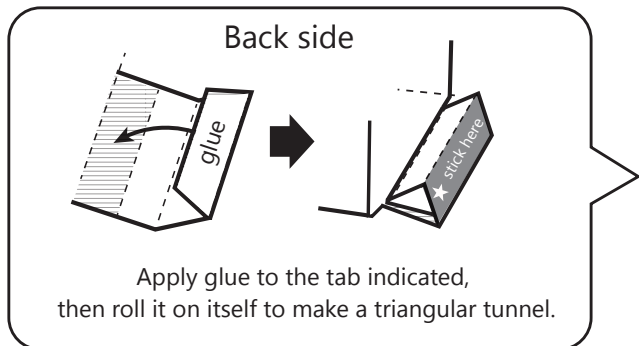
The *akabeko*, or red cow, is a papier-mâché toy often seen in the Aizu region of Japan (west Fukushima Prefecture). "Beko" is Aizu dialect for "cow". It has many origin stories, one of which describes how it was based on a real red-coloured cow that had helped to ward off a plague in the Heian period (12<sup>th</sup> century). The red colour here is thought to ward off evil, and also represents parents' wishes for their children to be protected from misfortune.



You're done! Try bobbing its head!

.....

"Beko" is Aizu dialect for "cow". It has many origin stories, one of which describing how it was based on a real red-coloured cow that had helped to ward off a plague in the Heian period (12<sup>th</sup> century). Why don't you try designing your own *akabeko*?



You're done! Try bobbing its head!



## Ajippa Interactive Exhibition Gallery



You can pick up this handout from Ajippa too!