

Seeking Sweetness

きゅーぱく秋のツター

かん み きゅう しん
甘味求心

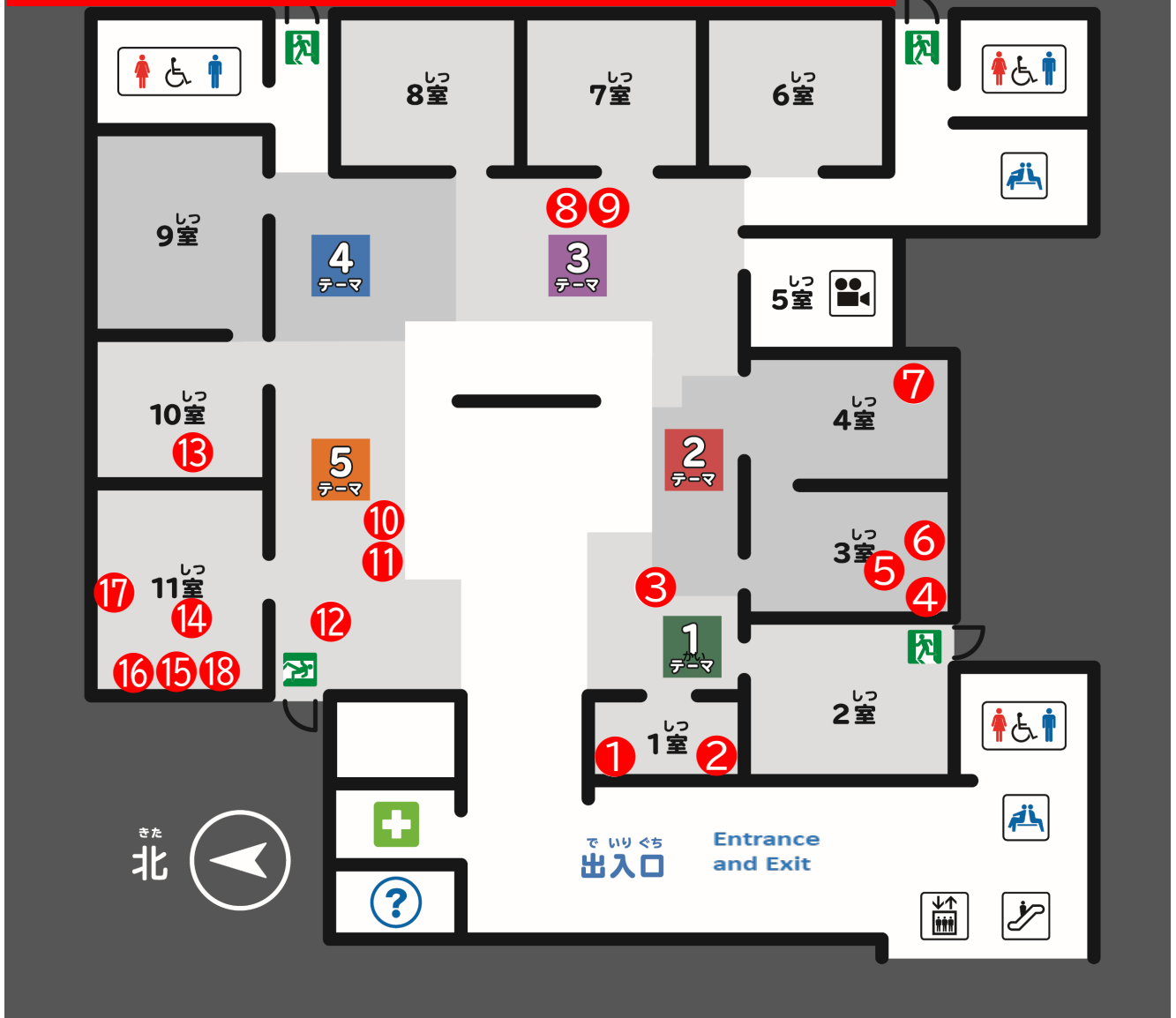
7 Oct (Tue) - 21 Dec (Sun) 2025

List of Works

Look for this symbol



4F Cultural Exchange Exhibition Hall



① Handled bowl with birds and flowers in overglaze enamels

Throughout the exhibition



Edo period
17th century
Kyushu National Museum

② Large bowl with birds, flowers and fruit in overglaze enamels

Throughout the exhibition



Edo period
17th century
Kyushu National Museum

③ Earthenware stemmed vessel with openwork

Throughout the exhibition



Jōmon Period
4,000-3,000 years old
Kyushu National Museum

④ Bracelets with bells

On display until 11/3



Bronze Age to Iron Age
3rd century BCE-2nd century CE
Kyushu National Museum

⑤ Basin with inscriptions, decorated in colored lacquer

On display until 11/3



Western Han dynasty
Dated 4 CE
Kyushu National Museum

⑥ Comma-shaped beads

On display until 11/3



Kofun period
6th-7th century
Kyushu National Museum

⑦ Haniwa coffin

Throughout the exhibition

Kofun period
5th century
Munakata City Board of Education, Fukuoka



⑧ Gilt bronze Buddha baptismal pouring bowl

Throughout the exhibition



Important Cultural Property
Heian period, 12th century
Tokyo National Museum

⑨ Statue of Shakyamuni at birth and bronze bowl (Replica)

Throughout the exhibition



Dated 1968 (original: 8th century)
Tokyo National Museum
(original: Tōdai-ji Temple, Nara)

10 Three-tiered cut-glass box



Throughout
the
exhibition

Edo period
19th century
Kyushu National
Museum

11 Plate with oriental
landscapes in indigo

Throughout
the
exhibition



Edo period
Dated around 1836
Kyushu National Museum

12 Stemmed cups with
cherry blossom roundels
in overglaze enamels

Throughout the
exhibition



Edo period
18th century
The Ogōri C.C. Collection

13 Bowl depicting a dragon
in overglaze enamels

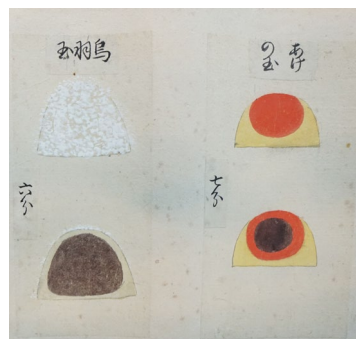
Throughout
the
exhibition



Edo period
17-18th century
The Ogōri C.C. Collection

14 Illustrated chart of a hundred confections

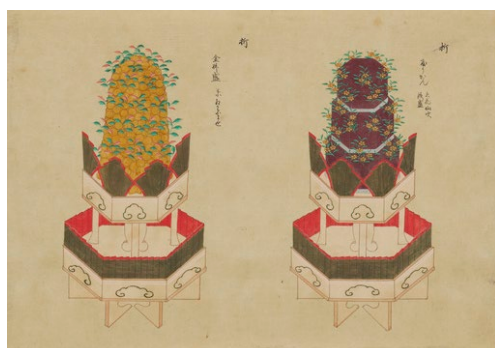
On
display
from
12/9



Edo period
19th century

15 Illustration of meals
for 7-5-3 ceremonies

On
display
from
12/9



Edo period
Dated 1810
Kyushu National Museum
Donated by Mr. Gōda Torahiko

16 Dishes with floral and
autumnal leaf motifs
in underglaze blue

On
display
from
12/9



Edo period
19th century
Kyushu National Museum

17 *Tenjin visits Tang China*
By Sengai Gibon

On display
from 12/9

Edo period
19th century
Genjūan Temple, Fukuoka



18 *Omanjū Dokoro* Signboard

On display
from 10/21
to 11/30

Edo period
Meiji-Shōwa era, 20th century
Jōtenji Temple, Fukuoka



1 F Ajippa

Wooden molds for making sweets



1 Vietnam

2 China **4** **5** Japan

3 Korea

6 Netherlands



7 Vietnamese coffee filter



8 Mangosteen-shaped containers



9 Stand for moon-viewing dumplings



11 Poffertjes pancake pan



10 Lidded Delft ware bonbon container

