



JOURNEY TO MÉXICO @ KYUHAU

KYUSHU NATIONAL MUSEUM

EXCHANGE STUDENT EVENT 2023!



FREE

3 NOV 2023 (FRI • PUBLIC HOLIDAY) 13:00-16:20

Registration from 12:30 near the Information Counter (1F)!

Catch a lively show of dancing skeletons,
join a **guided tour** of our Special Exhibition
Hall in simple Japanese, and make your very
own **DIY sugar skull keychain!**

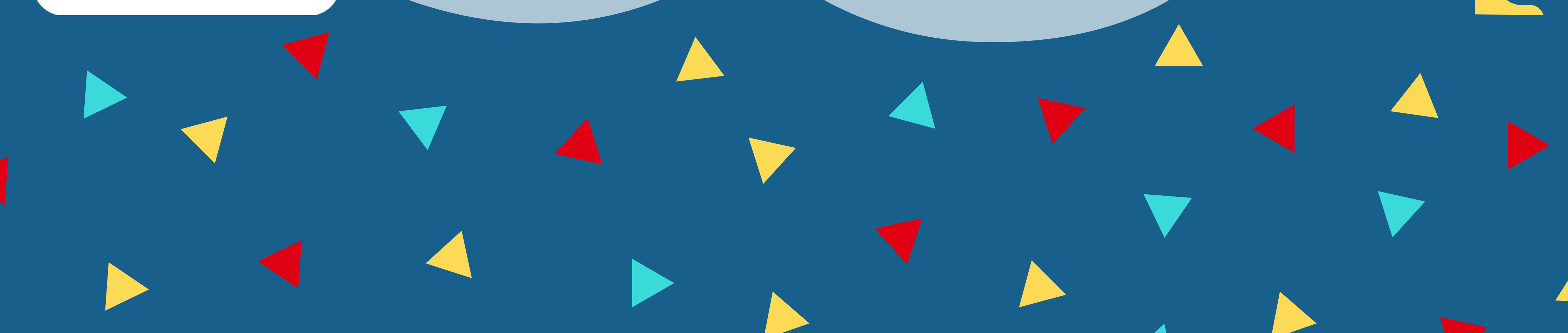
20 spaces available!
**Open to international students,
ALTs, and CIRs**

Registration closes 23 Oct
Hurry, register now!



← **Scan for registration and more information!**

* Please note that participants will be decided by a randomized ballot if sign-up numbers exceed event capacity.





WHAT IS THE DAY OF THE DEAD?

Observed every year on 1 and 2 Nov, the Day of the Dead is an important Mexican tradition dating back thousands of years. Through joyous festivities, the living honor and celebrate the lives of loved ones who have passed.

13:30~14:00

Dancing Skeletons!

Who says skeletons have to be scary, or gloomy? Carpe diem – these fun, dancing skeletons are a cheery reminder to seize the day, and a loving homage to the deceased. Don't miss this special performance!

wow, cool!



PERFORMANCE BY:
ANMITSU HIME

14:10~15:10

Special Exhibition Tour in Simple Japanese

Our Special Exhibition Ancient Mexico introduces the ancient civilizations of Mexico, with a focus on the Maya, Aztec, and Teotihuacan civilizations. With our researchers' explanations in simple Japanese, explore the unique worldviews behind the deep mysteries and fascinating appeal of ancient Mexico's civilizations.



15:20~16:20

Sugar Skull Keychain DIY

During Day of the Dead celebrations, brightly-coloured sugar skulls can be found everywhere. They are popular with both children and adults, as decoration and as a delicious treat. During the activity, you will get to experience this Mexican folk art by making your own DIY sugar skull keychain accessory!



Nishitetsu Train

From Nishitetsu Fukuoka (Tenjin) station, take the Omuta line to Nishitetsu Futsukaichi station (16 min ltd. express/ 18 min express). Change to the Dazaifu line and take the train to Nishitetsu Dazaifu station (5 min), and walk to the museum (10-15 min). * No extra fees required for express and ltd. express trains

JR

From JR Hakata Station, take the Kagoshima Line to JR Futsukaichi Station (about 15 min by rapid train). Transfer to Nishitetsu Futsukaichi Station (12 min walk OR 6 min bus), take the Dazaifu Line to Nishitetsu Dazaifu Station, and walk to the museum (10-15 min).

Nishitetsu Bus

Take the straight bus from Hakata Bus Terminal (Level 1, Gate 11 for Dazaifu, 40 min) to Dazaifu station, then walk to the museum (10-15 min).